

7 ALBEMARLE STREET
CLITHEROE
BB7 2EA

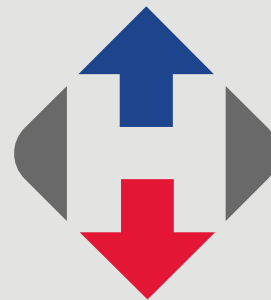
£169,995



- Garden fronted stonebuilt terrace
- Popular location close to town centre
- 2 double bedrooms, 3-piece bathroom
- Lounge, dining room & fitted kitchen
- Now in need of modernisation
- Superb potential to upgrade
- Gas CH & majority double glazed
- 85 m2 (915 sq ft) approx.

honeywell.co.uk

Albemarle Street is situated in a sought-after spot just off Castle View and as such enjoys great access to both the town centre amenities and the nearby countryside with pleasant walks down to the River Ribble.



Accommodation comprises an entrance porch, hallway, lounge, dining room and kitchen. On the first floor there are two double bedrooms along with a 3-piece bathroom.

Outside there is a small walled garden area to the front and an enclosed low maintenance yard to the rear with outhouse.

LOCATION: From our town centre offices head down Parson Lane and cross the mini roundabout. Follow the road along before turning right onto Castle View. From here take the third left onto Albemarle Street. Number 7 is on the left hand side.

ACCOMMODATION: (Imperial dimensions in brackets: all sizes approximate):-

ENTRANCE PORCH: With a glazed external door and glazed internal door to:

HALLWAY: With staircase to the first floor landing and ceiling arch.

LOUNGE: 3.3m x 3.4m (10'8" x 11'0"); with a wall-mounted gas fire in a stone surround and electric meter cupboard.

DINING ROOM: 4.3m x 4.0m (14'2" x 13'2"); with 2 wall light points, wall-mounted gas fire in surround and understairs storage cupboard.

KITCHEN: 2.2m x 4.1m (7'1" x 13'6"); with a range of fitted base and matching wall storage cupboards with complementary work surface, electric oven point, single drainer stainless steel sink unit, plumbed and drained for an automatic washing machine, breakfast bar, tiled flooring and glazed external door to the rear of the property.

FIRST FLOOR:

LANDING: With skylight window.

BEDROOM ONE: 4.4m x 3.4m (14'4" x 11'0"); with 3 wall light points.

BEDROOM TWO: 2.5m x 4.0m (8'2" x 13'1"); with built-in storage cupboard.

BATHROOM: 3-piece suite comprising a low level w.c., pedestal handwash basin and a panelled bath with plumbed shower over and built-in storage cupboard housing hot water cylinder.





OUTSIDE: To the front of the property is a small enclosed walled garden area. To the rear is an enclosed low maintenance yard with an ATTACHED outhouse with power and light, water and a low level w.c.

HEATING: Gas fired hot water central heating system complemented by majority double glazed windows in a mixture of wooden and UPVC frames.

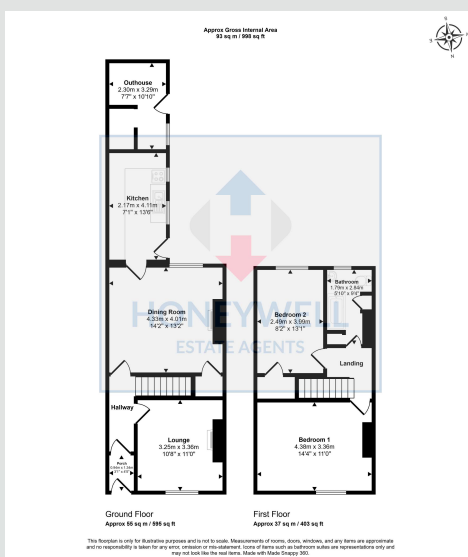
SERVICES: Mains water, electricity, gas and drainage are connected.

COUNCIL TAX BAND B.

VIEWING: By appointment with our office.

SELLING YOUR OWN HOUSE? We will be happy to provide free valuation and marketing advice, without obligation - please ask for details.





7 Albemarle Street, Clitheroe, BB7 2EA
MJ/CJ/090725

Selling Your House? We will be happy to provide free valuation and marketing advice, without obligation - please ask for details

1 Castlegate, Clitheroe. BB7 1AZ
T: 01200 426041 E: houses@honeywell.co.uk



 HoneywellEstateAgents

 HoneywellAgents

honeywell.co.uk

Please note: These particulars are produced in good faith, but are intended to be a general guide only and do not constitute any part of an offer or contract. No person in the employment of Honeywell Estate Agents Ltd has any authority to make any representation or warranty whatsoever in relation to the property. Photographs are reproduced for general information and do not imply that any item is included for sale with the property.